

STEEL SHOP

*Offering quality medium to heavy fabrication and multi-metal
processing to a variety of industries*

COMPANY PROFILE



Steel Shop Ltd
Falcon Industrial Park
Meadow Lane
Loughborough
Leicestershire, LE11 1HL

Tel: 01509 556 677
Fax: 01509 243 800
Email: sales@steel-shop.co.uk
Web: www.adeygroup.co.uk



Steel Shop Ltd, part of the Adey Group, are specialists in medium to heavy fabrication work and multi-metal processing, supplying to a variety of different industries throughout the UK.

Our policy of continuous investment in recent years both in our staff and equipment means we have the latest manufacturing abilities and staff who are highly motivated and driven by the customers needs. We pride ourselves on our outstanding service, often working to tight deadlines.

Operating from a large production facility based at our 5 acre site HQ in Loughborough, we work predominantly from customers drawings and plans but are not averse to converting work from sketches or even mere concepts, doing whatever it takes to help solve the problems that our customers are faced with.

Your problems are our problems meaning our aim is always to go the extra mile in order to create a working relationship that gives our customer the utmost confidence that we will deliver on our promises.



1. COMPANY DETAILS

Company Name	STEEL SHOP LTD		
Address & Registered Office	Falcon Industrial Park Meadow Lane Loughborough Leicestershire LE11 1HL		
Tel No	01509 556677	Fax No	01509 243 800
E-mail	sales@steel-shop.co.uk	Web Site address	www.adeygroup.co.uk
Company Reg No	2796106	Founded	1925
Size of Site	4.5 acres		
Holding Company Name	Adey Holdings Ltd		

2. TRADE / WORK PACKAGES UNDERTAKEN

General Fabrication

Working mainly from detailed fabrication drawings Steel Shop undertake manufacture work for a large range of structures and fabrications such as.....

- Crusher parts for the quarrying industry.
- Heavy duty hoppers and frameworks for water filtration.
- Extension arms for dockside cranes.
- Airport protection systems
- Communications masts

We have a very flexible workforce, so if you don't see the type of fabrication you are looking to place, come and pay us a visit or contact us with your requirements.

House Builders

Steel Shop has many years of experience in supplying cut and fabricated structural steel beams and other metalwork such as fencing, gates, splice plates and post shoes for local builders and nationwide construction companies. We can process your order over the telephone, or from your architects drawings / structural calculations providing a fast and accurate service no matter how large or small your project.

For larger projects, or those requiring design work and site installation you may want to liase with our dedicated 'House Builder and Architectural Division', (*part of Adey Steel*) where our experienced Contract Managers are able to work closely with your site agents to plan the project under the latest Health & Safety requirements.

Either way, the Adey Group has the solution to all your structural steelwork problems.

Steel Stockholding (and non-ferrous)

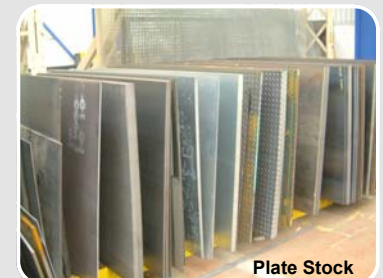
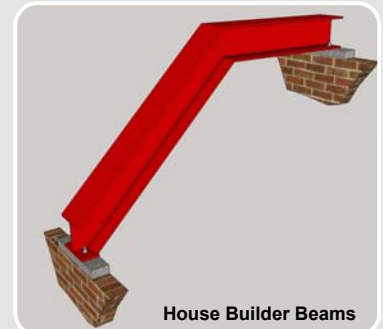
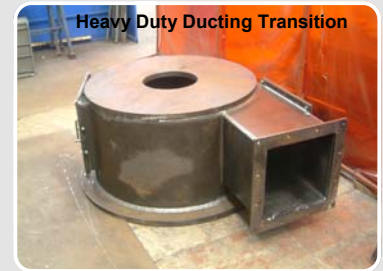
Steel Shop keep a comprehensive range of standard steel sections and plates in stock, such as UB's, angles, flats, tube, box section and bright drawn, as well as some stainless and aluminium.

However, we will always attempt to source non-standard items from within our extensive supplier base.

Contact our sales team and let them do the searching for you.

Component Processing

Steel Shop offer services for component processing for both plate and steel sections using the latest automated machinery. See the pages following for more details.



3. SALES & PRODUCTION ENGINEERING

Our friendly and knowledgeable sales team are always ready to take your call and start the process of solving your problem. We aim to get you a fair quotation prepared with the minimum of fuss and time delay, depending on the complexity of your product.

To support each sales enquiry we have a dedicated Production Engineering Department that:

- Looks at the best method of producing your product with the machine tools and associated activities available within the Company.
- 'Value Engineers' the product in order to reduce manufacturing costs.
- Creates a work document package to include all your requirements such as material traceability, material certification, dimensional checks, weld history, 3rd party NDT certification, paint specification and transportation requirements.



4a. PRODUCTION - FACILITIES

Based on a 4.5 acre site, we have ample space to allow us to undertake a wide variety of work. We have 4400m² undercover in several bays, each of which is dedicated to a particular type of work be it structural steelwork, architectural metalwork or industrial products.

We have a group in-house capacity in excess of 2000 hours/week, and we run an extensive nightshift to help reduce lead times. We have state-of-the-art equipment including NC sawing, drilling and profiling systems, which compliments our fully trained, qualified workforce. All our workshops are serviced with both overhead and jib cranes.

We have a policy of continual investment in modern processing equipment and workforce training programmes, including lean manufacturing, to ensure we maintain an efficient production facility.

Flexibility of our workforce is one of the keys to our success. This is an essential requirement given the wide variety of work we are able to undertake. Where necessary, we undertake trial assemblies to ensure that the finished product will satisfy exacting architectural and engineering requirements.

Our welders are coded to ASME 1X, EN 288/287 standards and we have a lifting capacity up to 15 tonnes.

We can supply products in a variety of finishes to suit your needs such as painted, powder coated and galvanised.



4b. PRODUCTION - MULTI-METAL PROCESSING

We have a large dedicated processing shop that not only services our fabrication activities but which also allows us to offer to our customers a full range of cutting and metalworking services, including:

- Guillotining (up to 12mm thick x 3m long)
- Sawing (cut to size square ends or mitred)
- Plate folding
- Rolling
- Drilling or Punching (round or slotted holes)
- Notching
- Laser cutting

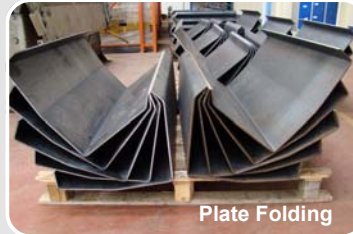


Plate Folding



Sawing



Punching



Rolling



Guillotining

4c. PRODUCTION - PLATE PROFILING & MACHINING

We have recently invested in a **FICEP Tipo A31 multi-function PLASMA Fabrication and Machining Centre (FMC)** which gives us the capability (typically via your NC or DXF files) to produce large quantities of shaped plates & structural steel fittings (from 10mm up to 150mm thickness) quickly and efficiently, cut, drilled, tapped, chamfered, milled, reference stamp marked all in one operation and finally palletised ready for shipping direct to your workshop area.



High-Def Plasma



Tipo A31 FMC



Components



Milled Pocket

4d. PRODUCTION - DRILL & SAW LINE

To complement our House Builder and Structural Steel Divisions we have a **FICEP CNC 'drill and saw line'** which enables us to produce structural steelwork quickly and accurately resulting in very competitive rates and lead-times that are second to none for your site managers.

We can either import your NC files directly, or programme our automated drill & saw line in house from your drawings / sketches.



Ficep NC Drill / Saw Line

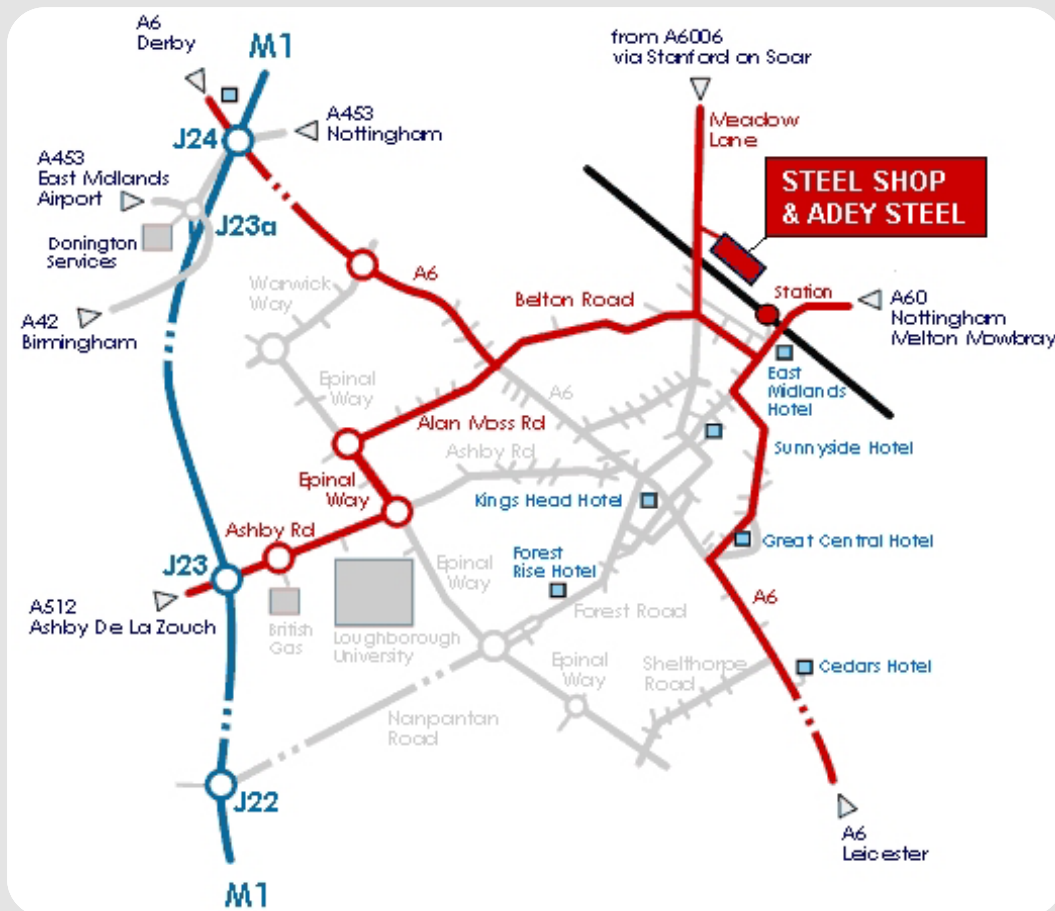
5. QUALITY & ENVIRONMENTAL MANAGEMENT

Company Information	YES	NO
Formal Quality Management System	✓ * (In-house System)	
Formal Environmental Policy	✓	

6. LOCATION

We are centrally positioned off Junction 23 M1, close to the M6, M69, A14 and A50 interchanges, giving us quick and easy access for nationwide delivery using our sister company TRANSPORT 24

We make regular deliveries within a 100 mile radius but no distance is too far for us. In fact, we have also supplied goods to Northern Ireland, Scotland and containerised products all over the World.

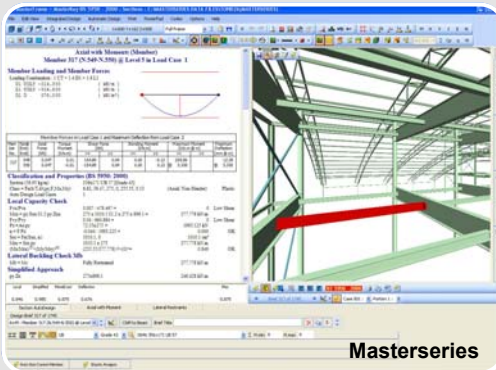


With our sister company **ADEY STEEL** we form a 'powerful combination' meaning we can also offer the following additional services.

7. DESIGN

Our in-house design department aims to ensure we provide economical design solutions by considering the choice of materials, methods of fabrication and installation, and health and safety considerations under CDM.

We use the latest 3D design software developed by 'Masterseries' that allows us to undertake 'design and build' projects, as well as connection design for traditional consultant designed projects.

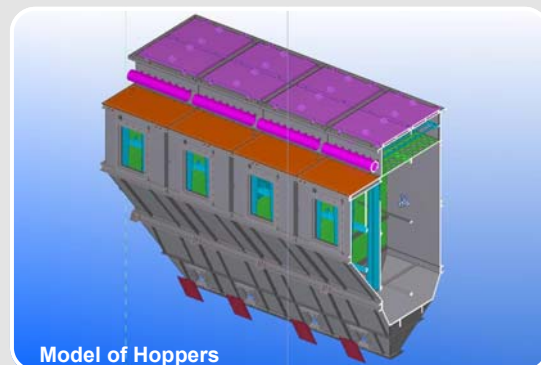


8. DRAWING OFFICE

We can develop projects using 'Tekla Structures' industry leading 3D modelling software, which enables us to turn our client's concepts into production realities. In addition to the traditional 2D drawings expected, we can present 3D rendered models 'live' at design meetings or send out 3D viewers of a model for our clients to review at their leisure.

We utilise the software throughout a project's early development, ensuring close integration with the clients professional design team right through to production and site erection, by producing the various general arrangement and fabrication drawings.

The automatic manufacturing data generated by the model is used for production planning, and NC (*manufacturing*) files are fed directly into our workshop equipment, resulting in an accurate finished product that will be fabricated exactly to the 3D model specifications and fit first time on site.



9. SITE

Site installation is the 'shop window' of Adey Steel's operations and our site services department ensures that we have the right skills in place according to the type of work undertaken. We employ in-house erection teams supplemented by long-term partnered sub-contractors. We have an excellent track record in Health & Safety and all our site operatives are 100% CSCS compliant.

We will work closely with the client's professional team and other site trade contractors to plan and execute our site activities efficiently. Through our extensive experience we able to suggest innovative installation techniques when faced with complex site constraints. Furthermore, we maintain Adey Steel's flexible approach when addressing unexpected site issues by always seeking to overcome any difficulties and minimise any consequential impact to the project.

